

BUILDING SUPPLY



WELCOME.

Custom Truck One Source (Custom Truck) is the first true single-source provider of specialized truck and heavy equipment solutions, offering a vast rental fleet, new and used equipment sales, aftermarket parts and tooling supply, world-class service, customization and remanufacturing, in-house financing solutions and reliable liquidity of aged assets through our auction. Our equipment breadth, seasoned experts, and integrated network of locations across North America together deliver superior service and unmatched efficiency to our customers. Dig in at customtruck.com and keep up with us on Facebook, Instagram and Twitter.



NEW AND PRE-OWNED EQUIPMENT SALES

Custom Truck sells new and pre-owned equipment through its premier network of integrated locations across North America. We stock a wide variety of popular chassis, specialized bodies and equipment brands, ready for assembly into the combination that will best fit your needs.

VAST RENTAL FLEET AND SERVICE NETWORK

Top contractors throughout the heavy equipment sectors rely on Custom Truck's vast rental fleet to deliver mission-critical equipment solutions that ensure they work more efficiently. Our on-hand rental inventory is one of the leading in the industry in range, quality and accessibility, allowing customers to recover from unexpected equipment repairs and capitalize on unforeseen demand.

AFTERMARKET PARTS & SERVICE

We've aligned our unsurpassed range of equipment with an equally extensive inventory of chassis and equipment parts, available in-house and for overnight delivery. Custom Truck's proprietary service call-in center (CINC) delivers nationwide access to local service. Available 24/7 and manned by 150+ in-house equipment technicians, the CINC serves an unparalleled level of service throughout our premier network of facilities, located strategically across North America for optimal aftermarket repair and maintenance support.

PARTS, TOOLS, AND ACCESSORIES

Custom Truck offers a full line of parts, tools, and accessories for the utility industry. As a manufacturer, we produce a wide range of blocks, insulated tools and more. As a distributor for the industry's leading brands, we offer our customers the most trusted names in the business.

EQUIPMENT CUSTOMIZATION

Custom Truck specializes in custom design and fabrication of chassis frames and suspensions, bodies and equipment, allowing us to fulfill customers' most complicated customization demands. Our superior knowledge of the fluctuating needs across the equipment sectors, and expertise in hydraulics, chassis, and frame modifications far surpass any other dealer in the country.

REMANUFACTURING

Custom Truck has the exclusive ability to revitalize customer assets by remanufacturing aged equipment, maximizing performance over a longer life cycle, and optimizing utilization levels for the customer.

FINANCING SOLUTIONS

Customized & flexible leasing and financing solutions are available through our in-house lease provider Custom Truck Capital.

ASSET DISPOSAL

Convenient and reliable liquidity of your unusable assets via Custom Truck Marketplace and Custom Truck Auction.



TABLE OF CONTENTS

- 6 Load King Roofing Conveyor
- 12 Drywall Loaders
- 26 Telescopic Boom Cranes
- 32 Articulating Cranes
- 36 Heavy Haul Tractors
- 38 Box Trucks
- 40 Forklift Trucks
- 48 Telehandlers
- 50 Trailers

LOAD KING ROOFING CONVEYOR



HEAD SECTION:

- ALUMINUM DRUM STYLE V-GROOVE HEAD PULLEY TO KEEP BELT IN ALIGNMENT AND LESS MAINTENANCE
- STAINLESS STEEL HEAD SECTION HANDLES, PLATES, AND CHAIN GUARD
- EMERGENCY STOP HANDLE

TAIL SECTION:

- ALL STAINLESS STEEL CONSTRUCTED GUARDS
- ALUMINUM DRUM STYLE V-GROOVE HEAD PULLEY TO KEEP BELT IN ALIGNMENT AND LESS MAINTENANCE

CRADLE:

- 17FT. STEEL ONE-PIECE HEAVY GAUGE STEEL CONSTRUCTED
- SUPPORTS CONVEYOR OR FRAME STRUCTURE

BELT:

- PVC COVER + COVER NON-CONDUCTIVE BELT
- STAINLESS STEEL PADDLES
- BELT SPREAD 60FT. PER MINUTE

CROSS SUPPORTS:

- STAINLESS STEEL CONSTRUCTED UTILIZING 3 IDLER WHEELS WITH 2 NYLON GUIDES FOR LESS MAINTENANCE
- IDLER WHEELS WITH BALL BEARINGS FOR LONGER USE LIFE

OTHER:

- HYDRAULIC HOSE IS NON-CONDUCTIVE AND IS SECURED USING CAPTIVE HOLDERS
- ALL HARDWARE CONSISTS OF MAG 565 - A SPECIAL COATING THAT WILL NOT CORRODE AND WILL PERFORM LONGER OVER TIME
- ROOF STAND MADE OF STURDY STAINLESS STEEL

AT A GLANCE

HEAD SECTION

Stainless steel support plates & hinge cover remain free of rust. Sprockets are removable.

PADDLES

Stainless steel paddles with facing for better grip & less s

HEAD SECTION PULLEYS

Aluminum drum style V-grooved with 1/4IN. bolt lagging for belt grip and longer life.

ROOF STAND

All stainless steel construction. Will operate smoothly over the life of the conveyor.

CROSS SUPPORTS

All stainless steel. Constructed for longer rust-free life. Utilizes rubber coated idler wheels for belt guides, eliminating costly downtime for replacement of plastic angle belt guides.



rubber
slippage.

HARDWARE

All nuts, bolts, and washers are MAG 565 for longevity, appearance, and ease of maintenance.



TAIL SECTION & PULLEY

All stainless steel constructed guard will not rust. Aluminum drum style V-grooved pulley for longer use life.

VALVE CONTROLS

Valves are located higher up on the post for comfortable conveyor operations.

ROTATION MECHANICAL COMPONENTS

Post is integrated directly into the truck bed, utilizing a fixed drive motor, grease points, and less hose movement. Rotation components & drive motor are accessible via a removable plate for easy access.

POCKET BASE PLATE

Base plate is installed flush to truck bed for safer operator use.

STABILIZER

Vertical lift to reduce chance of surface damage.

A CLOSER LOOK



HEAD SECTION



Stainless steel support plates and hinge.

TAIL SECTION



All stainless steel constructed guard will not rust.

CROSS SUPPORTS



Hydraulic hose routing through the frame structure are captive in a holder.



PADDLES



Stainless steel paddle with rubber facing for better grip and less slippage.

STABILIZERS



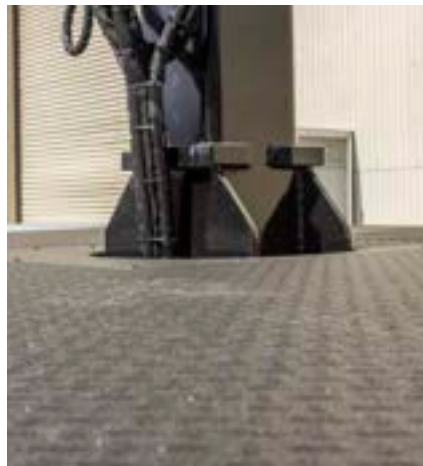
Vertical lift to reduce chance of surface damage.

VALVE CONTROLS



Valves located higher up on the post for comfortable conveyor operation.

POCKET BASE PLATE



Base plate is installed flush to truck bed for safer operator use.

ROTATIONAL MECHANICAL COMPONENTS



Post is integrated directly into the frame of the truck bed, utilizing a fixed drive motor, grease points and less hose movement. Rotation components and drive motor are accessible.

DRYWALL LOADERS



**MODELS AVAILABLE:**

IMT 16000

IMT 28562

IMT 42684

FASSI F280SE.22

FASSI F330SE.24

FASSI F360SE.24

FASSI F375SE.13

FASSI F375SE.14

FASSI F425SE.04

FASSI F390SE.24

FASSI F600SE.24

IMT 16000



CRANE RATING:
160,000 FT-LBS.

MAXIMUM LIFT CAPACITY:
5,825LBS.

LIFTING HEIGHT:
48FT.

HORIZONTAL REACH:
42FT.

VERTICAL REACH:
54FT. 1IN.

HYDRAULIC EXTENSION:
14.5IN.

450° ROTATION

TOP SEAT CONTROL STATION

AVAILABLE ON MANY DIFFERENT CHASSIS MAKES, MODELS

AT A GLANCE

ROTATION SYSTEM

- 450 degree turntable bearing powered by hydraulic motor
- Heavy-duty gearbox equipped with a head-treated pinion

OVERLOAD SYSTEMS

Hydraulic pressure sensor blocks load-increasing functions when full capacity is attained



OPTIONS

- Top seat control
- Platform
- High frame base
- Special paint colors available
- Work lights

STANDARD FEATURES

- Up to 42FT. of horizontal reach
- Lifting capacity - 3300lbs. @ Max horizontal reach
- Fully proportional radio remote control
- Ground control system
- Oil Cooler

IMT 28562



CRANE RATING:

161,490 FT-LBS.

MAXIMUM LIFT CAPACITY:

5,700 LBS.

LIFTING HEIGHT:

68FT.

HORIZONTAL REACH:

62FT.

VERTICAL REACH:

71FT.4IN.

HYRDAULIC EXTENSION:

35FT.4IN.

420° ROTATION

FULLY PROPORTIONAL RADIO REMOTE

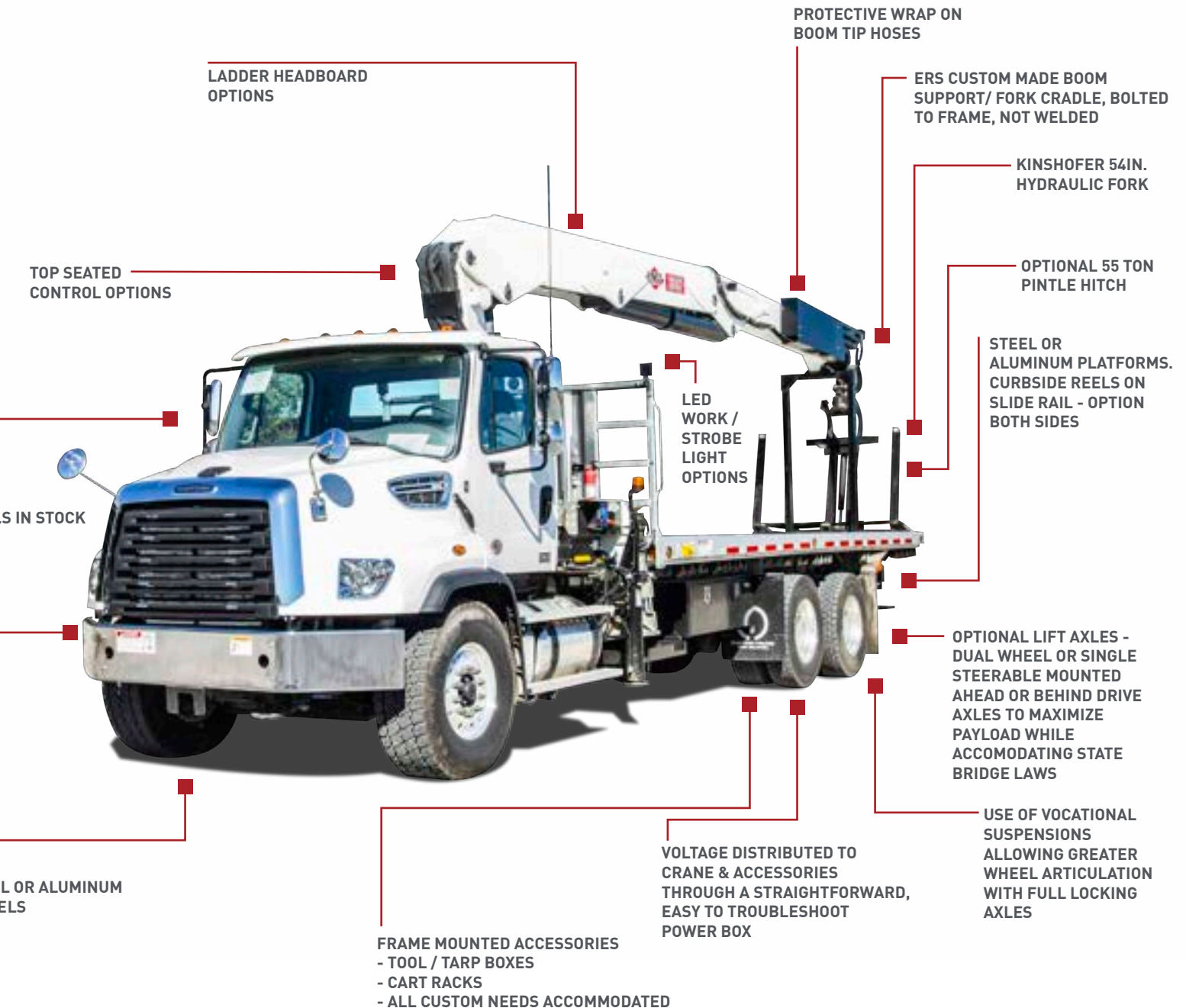
AVAILABLE ON MANY DIFFERENT CHASSIS MAKES, MODELS

YOUR CHOICE OF CHASSIS
- FREIGHTLINER 114SDFT.
- AUTO, MANUAL

HEAVY SPECFT.D CHASSIS
ORDERED FOR OPTIMAL
PERFORMANCE

STEEL
WHEELS

AT A GLANCE



IMT 42684

**CRANE RATING:**

308,580 FT-LBS.

MAXIMUM LIFT CAPACITY:

10,500 LBS.

HORIZONTAL REACH:

82FT.10IN.

VERTICAL HEIGHT TO BOOM TIP:

93FT.6IN.

HYDRAULIC EXTENSION:

20FT.3IN.

420° ROTATION

TOP SEAT CONTROL STATION

AVAILABLE CONTROL SYSTEMS

TOP SEAT PROPORTIONAL RADIO REMOTE

GROUP CONTROL PROPORTIONAL RADIO REMOTE

MAX CAPACITY @ MAX HORIZONTAL REACH:

3,300LB.



FASSI F280SE.22 LOADER

CRANE RATING : 187,732 FT-LBS.
 MAXIMUM LIFT CAPACITY : 4,025 LBS.
 LIFTING HEIGHT : 56FT.10IN.
 HORIZONTAL REACH : 44FT.11IN.
 HYDRAULIC EXTENSION : 17FT.11IN.
 420° ROTATION
 TOP SEAT CONTROL STATION

FASSI F330SE.24 LOADER

CRANE RATING : 168,485 FT-LBS.
 MAXIMUM LIFT CAPACITY : 5,950 LBS.
 LIFTING HEIGHT : 70FT.11IN.
 HORIZONTAL REACH : 58FT.9IN.
 HYDRAULIC EXTENSION : 31FT.4IN.
 420° ROTATION
 TOP SEAT CONTROL STATION

FASSI F375SE.13 LOADER

CRANE RATING : 232,641 FT-LBS.
 MAXIMUM LIFT CAPACITY : 8,300 LBS.
 LIFTING HEIGHT : 75FT.
 HORIZONTAL REACH : 64FT.2IN.
 HYDRAULIC EXTENSION : 36FT.3IN.
 430° ROTATION
 TOP SEAT CONTROL STATION

FASSI F375SE.14 LOADER

CRANE RATING : 271,168 FT-LBS.
 MAXIMUM LIFT CAPACITY : 7,900 LBS.
 LIFTING HEIGHT : 72FT.
 HORIZONTAL REACH : 72FT.
 HYDRAULIC EXTENSION : 44FT.5IN.
 430° ROTATION
 TOP SEAT CONTROL STATION

FASSI F425SE.04 LOADER

CRANE RATING : 252,172 FT-LBS.
 MAXIMUM LIFT CAPACITY : 9,000 LBS.
 LIFTING HEIGHT : 72FT.
 HORIZONTAL REACH : 61FT.
 HYDRAULIC EXTENSION : 32FT.8IN.
 470° ROTATION
 TOP SEAT CONTROL STATION

FASSI F600SE.24 LOADER

CRANE RATING : 289,320 FT-LBS.
 MAXIMUM LIFT CAPACITY : 1,390 LBS.
 LIFTING HEIGHT : 112FT.
 HORIZONTAL REACH : 100IN.
 HYDRAULIC EXTENSION : 73FT.0IN.
 360° ROTATION
 TOP SEAT CONTROL STATION

FASSI F360SE.24



60FT. HORIZONTAL REACH
 59FT.2IN. @ 2500LBS.
 DIRECT MOUNT TANDEM HYDRAULIC PUMP
 SCANRECO WIRELESS REMOTE CONTROLS
 GROUND AUXILIARY CONTROLS - NO TOP SEAT
 420° ROTATION
 LOAD HOLDING CHECK VALVES W/ LOAD MOMENT
 LIMITING DEVICE
 VOGEL AUTO GREASER
 CRANE PAINTED RED, BLACK CYLINDERS

ADDITIONAL EQUIPMENT

24.6FT. X 102IN. ALUMINUM BED W/ IN.STEPSIN. BULKHEAD
 FOLD OUT STEP DRIVER SIDE
 (12) SLIDING WINCHES & STRAPS
 O/R PAD STORAGE BRACKETS W/ ALUMINUM PADS
 SAFETY CONES & HOLDERS
 60IN. ALUMINUM TOOLBOX
 WINCH BAR W/ HOLDERS
 55 TON PINTLE HITCH W/ GLAD
 HANDS - SAE J560 7-WAY
 WORK LIGHT PACKAGE - 3 TOTAL
 STROBE PACKAGE - 6 TOTAL

AT A GLANCE

CHARACTERISTICS

- Rotation 420 degrees with rack and pinion
- Not foldable behind cab
- Automatic greasing system for the entire crane
- Superior protection of hose trays
- Multi Power Extension System (IN.MPESIN.) for exceptionally smooth and fast extension and retraction speed

LIFTING CAPACITY

Up to 2500lbs. @
Max horizontal reach

HYDRAULIC TANK

Large rust free, baffled, thick walled nylon hydraulic tank for long life and sized to assist in oil cooling

MAX OUTREACH

59FT.2IN. horizontal

STABILIZERS

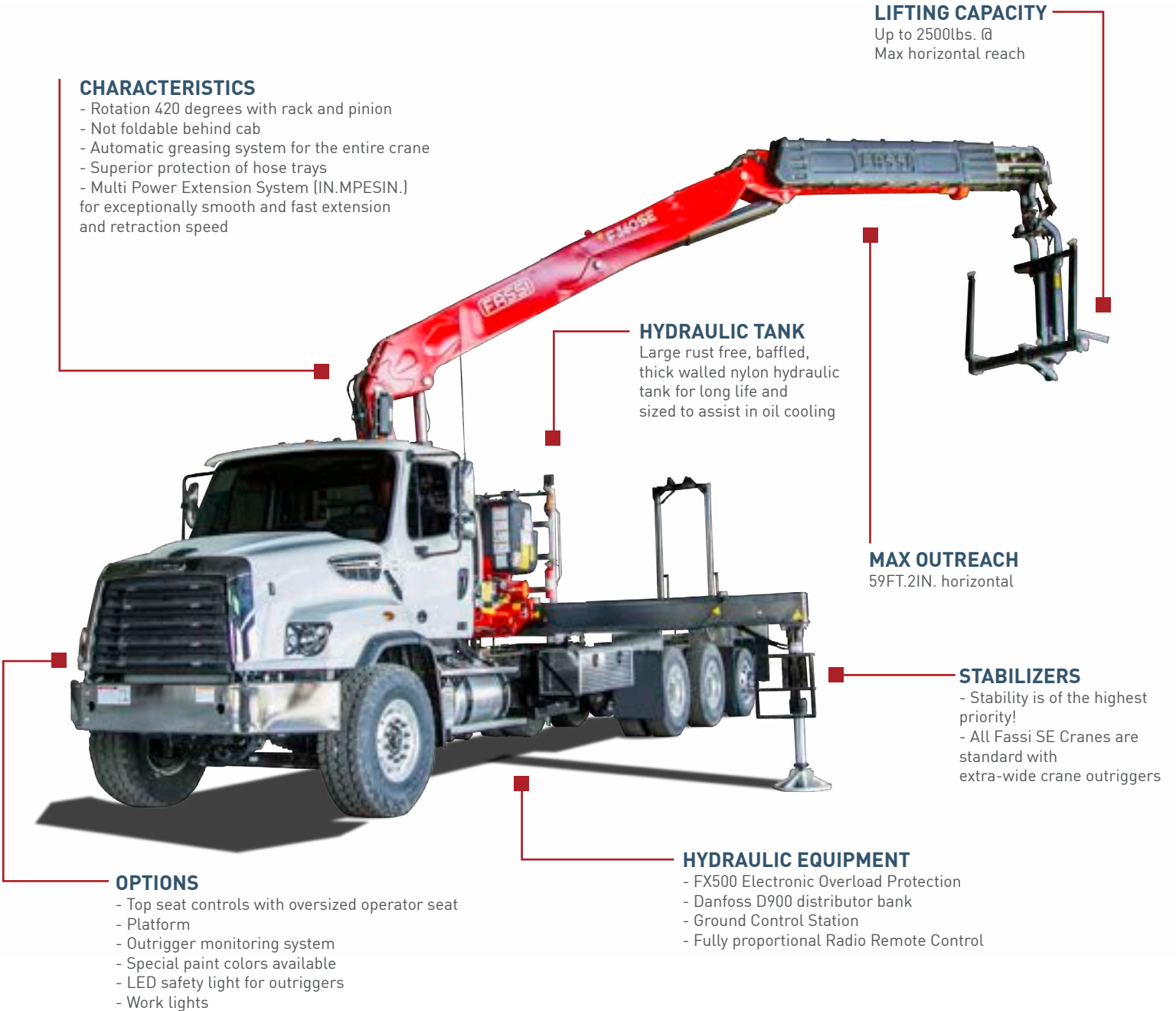
- Stability is of the highest priority!
- All Fassi SE Cranes are standard with extra-wide crane outriggers

OPTIONS

- Top seat controls with oversized operator seat
- Platform
- Outrigger monitoring system
- Special paint colors available
- LED safety light for outriggers
- Work lights

HYDRAULIC EQUIPMENT

- FX500 Electronic Overload Protection
- Danfoss D900 distributor bank
- Ground Control Station
- Fully proportional Radio Remote Control



FASSI F390SE.24



LIFTING CAPACITY: 202,524 LBS. FT.

STANDARD REACH: 78FT.11IN. FT.

HYDRAULIC EXTENSION: 51FT. 5IN. FT.

ROTATION ARC: 430°

ROTATION TORQUE: 49,117 LBS. FT.

WORKING PRESSURE: 4360 PSI

PUMP CAPACITY: 16+16 GAL/MIN

OIL TANK CAPACITY: 66 GAL

OUTRIGGERS SPEED CRANE: 22FT.6IN. FT.

SUPPLEMENTARY OUTRIGGERS: CCC

DEGREE OF BOOM ELEVATOR: 85°

WEIGHT WITH SUPPS: 17,100 LBS.

AT A GLANCE

CHARACTERISTICS

- Rotation 430 degrees with rack and pinion
- Not foldable behind cab
- Automatic greasing system for the entire crane
- Superior protection of hose trays
- Multi Power Extension System (IN.MPESIN.) for exceptionally smooth and fast extension and retraction speed

TWO HYDRAULIC EXTENSIONS IN MAIN BOOM

LIFTING CAPACITY
4500 lbs. max capacity at 90FT.5IN. less fork weight

MAX OUTREACH
7811IN. horizontal

HYDRAULIC TANK

Large rust free, baffled, thick walled nylon hydraulic tank for long life and sized to assist in oil cooling

STABILIZERS

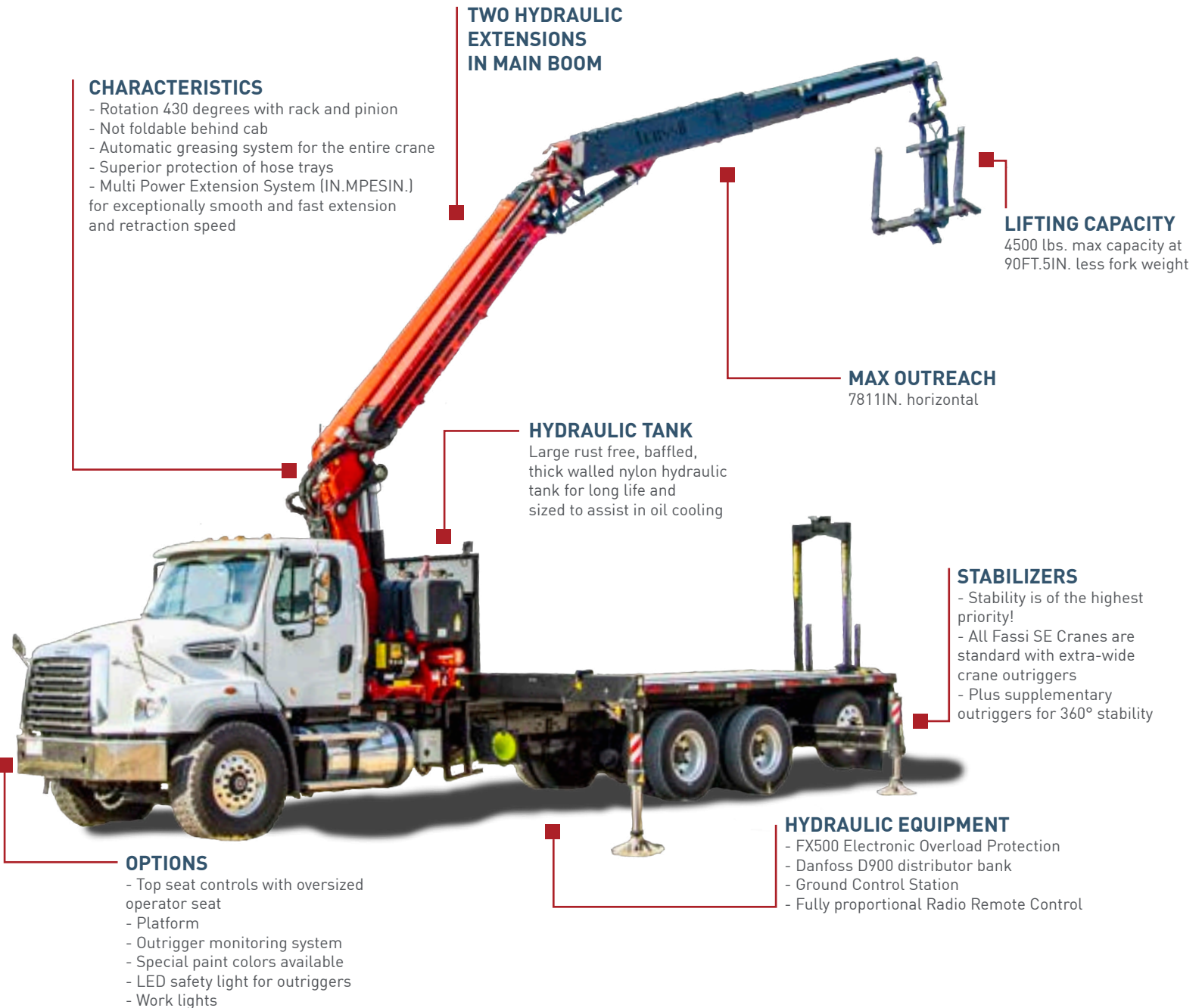
- Stability is of the highest priority!
- All Fassi SE Cranes are standard with extra-wide crane outriggers
- Plus supplementary outriggers for 360° stability

OPTIONS

- Top seat controls with oversized operator seat
- Platform
- Outrigger monitoring system
- Special paint colors available
- LED safety light for outriggers
- Work lights

HYDRAULIC EQUIPMENT

- FX500 Electronic Overload Protection
- Danfoss D900 distributor bank
- Ground Control Station
- Fully proportional Radio Remote Control





TELESCOPIC BOOM CRANES

MODELS AVAILABLE:

LOAD KING STINGER 19-70

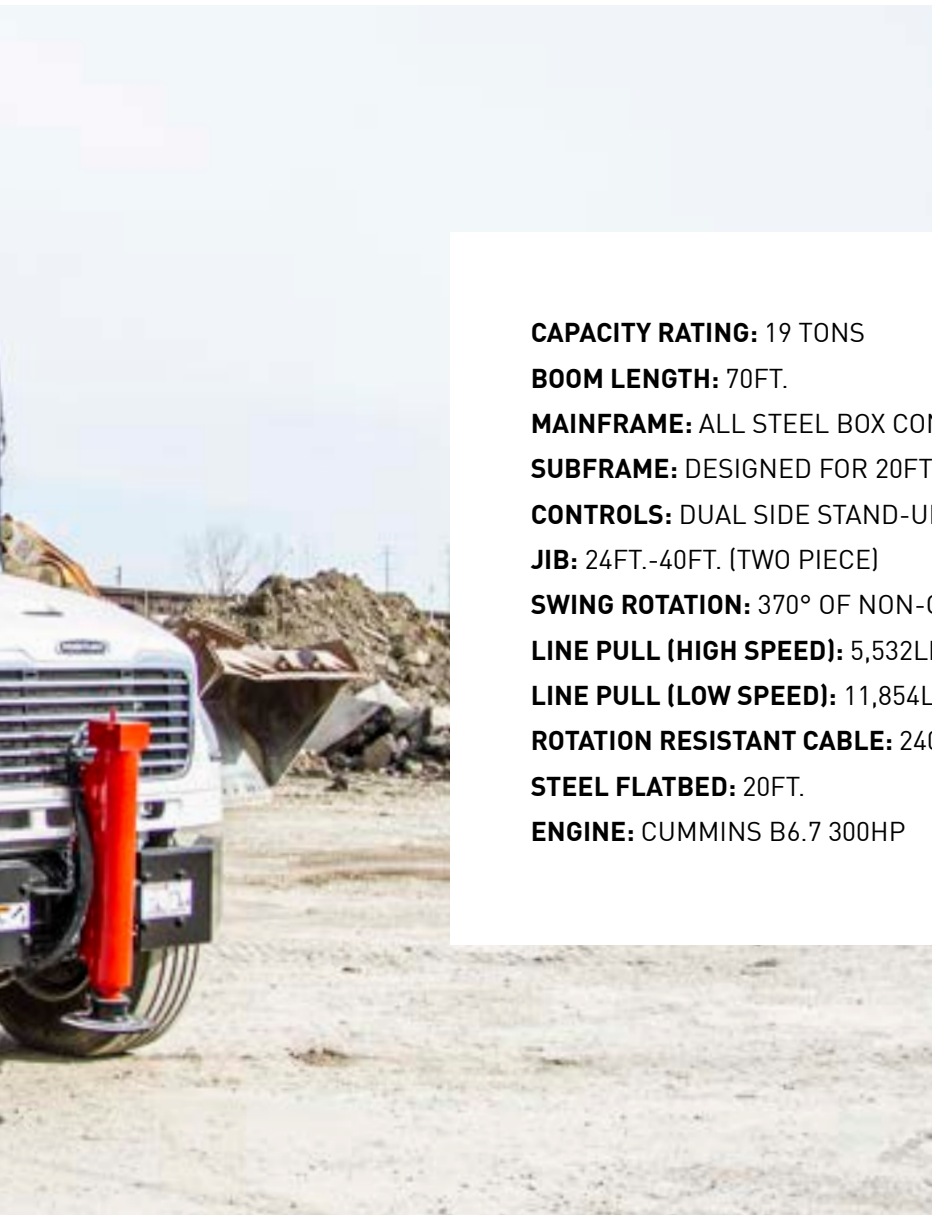
LOAD KING STINGER 35-127M



LOAD KING STINGER 19-70

FORMERLY THE TEREX BT 3870, THE LOAD KING STINGER 19-70 IS EQUIPPED WITH A 70 FT. FULLY SYNCHRONOUS TELESCOPIC KEEL BOOM. THE STINGER 19-70 FEATURES A MAXIMUM LIFTING CAPACITY OF 19 TONS (38,000 LBS). THIS LOAD KING CRANE MODEL ALSO BOASTS ENHANCED DUAL OPERATOR CONTROL STATIONS AND LOAD MOMENT INDICATOR WITH WORK AREA DEFINITION.





CAPACITY RATING: 19 TONS

BOOM LENGTH: 70FT.

MAINFRAME: ALL STEEL BOX CONSTRUCTION

SUBFRAME: DESIGNED FOR 20FT. FLATBED

CONTROLS: DUAL SIDE STAND-UP

JIB: 24FT.-40FT. (TWO PIECE)

SWING ROTATION: 370° OF NON-CONTINUOUS

LINE PULL (HIGH SPEED): 5,532LBS.

LINE PULL (LOW SPEED): 11,854LBS.

ROTATION RESISTANT CABLE: 240FT. X 9/16IN.

STEEL FLATBED: 20FT.

ENGINE: CUMMINS B6.7 300HP

LOAD KING STINGER 19-70

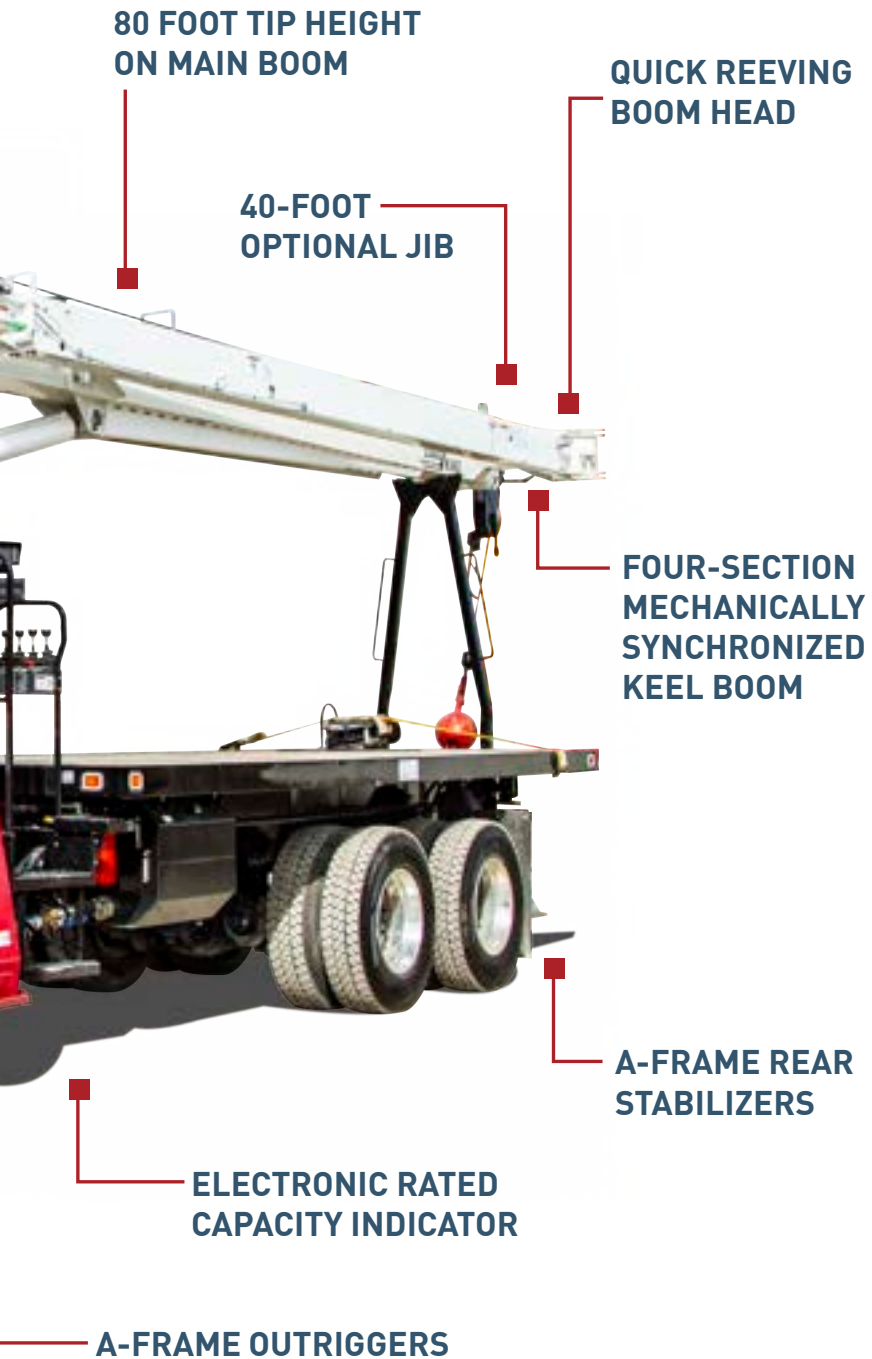
BURST OF SPEED WINCH

19-TON CAPACITY

OPTIONAL FRONT
OUTRIGGER FOR
360° CHART



AT A GLANCE



LOAD KING STINGER 35-127M



LOAD KING STINGER 35-127M

5-SECTION PROPORTIONAL 127FT. HIGH-STRENGTH STEEL KEEL BOOM

M-STYLE MULTI-POSITION OUTRIGGERS (FULL, MID AND ZERO SPAN)

MAXIMUM TIP HEIGHT OF 192FT. WITH OPTIONAL TWO-PIECE 55FT. JIB

WINCH CONTROL AT THE REAR OF THE CRANE

DUAL STAND-UP CONTROL STATIONS

DIRECT LINKAGE OPERATION FOR CRANE FUNCTIONS

ELECTRIC CONTROL OVER OUTRIGGERS

ELECTRONIC RATED CAPACITY INDICATOR WITH INTEGRATED WORK AREA DEFINITION

STANDARD OIL COOLER

FRONT BUMPER OUTRIGGER REQUIRED FOR 360-DEGREE OPERATION

AVAILABLE WITH REMOTE CONTROLS AND OUR NEW YOKE-STYLE BASKET

AVAILABLE WITH STANDARD OR SUPER DUTY WOOD OR STEEL BEDS.







ARTICULATING CRANES

IMT, HYVA & FASSI MODELS AVAILABLE
CAPACITIES RANGING FROM 1,740 LBS. TO
38,185 LBS. IDEAL FOR HANDLING
PALLETIZED MATERIAL EXCELLENT
LIFE & REACH CAPABILITIES PRECISE
MANEUVERABILITY EXCEPTIONAL
OPERATOR VISIBILITY AVAILABLE ON A
VARIETY OF CHASSIS MAKES & MODELS

IMT 32/222 ROOFING CRANE



CRANE RATING:
160,000 FT-LBS.

MAXIMUM LIFT CAPACITY:
5,825 LBS.

LIFTING HEIGHT:
79FT.

HORIZONTAL REACH:
67FT.

VERTICAL REACH:
79FT.

HYDRAULIC EXTENSION:
14.5IN.

450° ROTATION

TOP SEAT CONTROL STATION

AVAILABLE ON MANY DIFFERENT CHASSIS MAKES, MODELS

AT A GLANCE



HEAVY HAUL TRACTORS





WE STOCK A WIDE VARIETY OF MACK, KENWORTH, FREIGHTLINER, PETERBILT & INTERNATIONAL HEAVY HAUL TRACTORS THROUGHOUT OUR 26 LOCATIONS. ALL ON-HAND, ALL READY FOR THE CUSTOM BUILD OF YOUR CHOICE.



AIR SLIDE 5TH WHEEL

ALUMINUM HEADACHE RACK

ALUMINUM CATWALK & STEP

AIR & ELECTRIC LINES (COILED)

COLLECTED ON HOSETENNA

7-WAY PLUG

1/4 FENDERS ON REAR TANDEM AXLES

OPTIONS:

LED WORK LIGHTS

CHAIN RACKS

FULL FENDERS

1IN. STEEL PULL PLATE

PINTLE HITCH

TOOLBOX



BOX TRUCK & VAN TRUCKS



CURTAIN SIDE & REGULAR STYLES

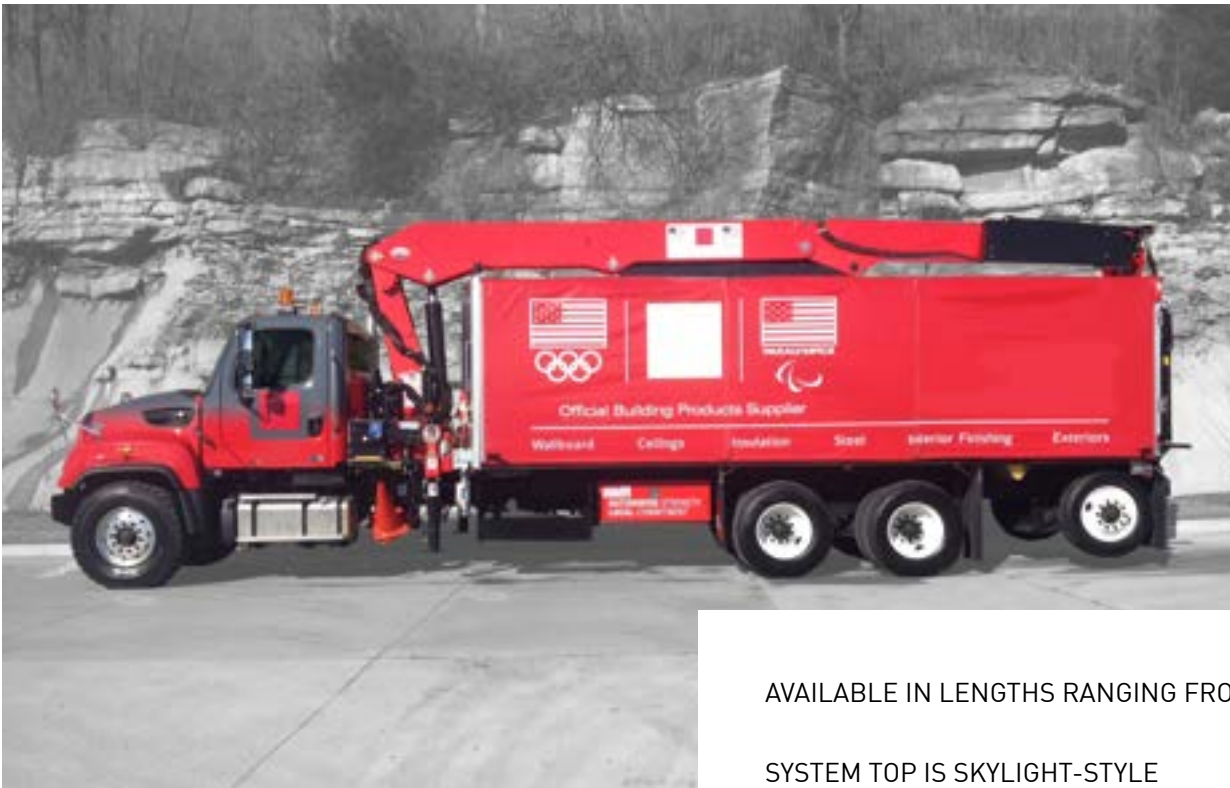
EXTENSIVE TOPPER STYLES, INCLUDING SKYLIGHT

LENGTHS OF 16FT. TO 26FT.

MULTIPLE AXLE CONFIGURATIONS

VARIOUS OPTIONS, ACCESSORIES AVAILABLE

ROLLING TARP SYSTEM



AVAILABLE IN LENGTHS RANGING FROM 20FT. TO 26FT.

SYSTEM TOP IS SKYLIGHT-STYLE

LED LIGHTS COME STANDARD

ALUMINUM, MODULAR BOWS

GREATEST CARGO VOLUME IN THE MARKET





TRUCK MOUNTED FORKLIFTS

MODELS AVAILABLE:

NAVIGATOR RT-4000

NAVIGATOR RT-5500

NAVIGATOR RT-6500

PROWLER



RT5500 NAVIGATOR

ALL-TERRAIN, TRUCK-MOUNTED FORKLIFT



5500 LBS. @ 24IN. LOAD CENTER
 DOUBLE STAGE MAST, 144IN. LIFT HEIGHT
 104.5IN. OVERALL HEIGHT
 75IN. MOUNTED OVERHANG
 100IN. MACHINE WIDTH
 5800 LBS. DRY WEIGHT
 8° MAST TILT
 5IN. SIDE SHIFT
 60IN. FRAME OPENING
 30IN. MAST TRAVEL
 31X15.5X15 TIRES (3)
 HYDROSTATIC DRIVE
 60HP KOHLER DIESEL TIER FOUR ENGINE
 8 MPH MAX TRAVEL SPEED
 BACK UP ALARM
 48IN. LUMBER FORKS
 TIRE SEALANT
 PARKING BRAKE
 STROBE LIGHT
 LOAD BACKREST

NAVIGATOR RT-4000

LIFT CAPACITY : 4000 LBS.
 STANDARD LIFT HEIGHT : 8 FT.
 OPTIONAL LIFT HEIGHT : 10 FT.
 OVERALL HEIGHT : 98.5 IN.
 MINIMUM MOUNTED OVERHANG : 64 IN.
 WIDTH : 100 IN.
 WEIGHT (READY TO OPERATE) : 3900 LBS.
 MAST TILT : 8°
 SIDE SHIFT : 5 IN.
 FRAME OPENING : 60 IN.
 FORK TRAVEL : 30 IN.
 DRIVE TIRES : (2) 31 X 15.5 X 15
 TRANSMISSION : HYDROSTATIC DRIVE
 ENGINE : 37 HP WATER COOLED DIESEL
 MAX TRAVEL SPEED : 9MPH

NAVIGATOR RT-6500

LIFT CAPACITY : 6500 LBS.
 STANDARD LIFT HEIGHT : 12 FT.
 OPTIONAL LIFT HEIGHT : 10 FT.
 OVERALL HEIGHT : 104.5 IN.
 MINIMUM MOUNTED OVERHANG : 75 IN.
 WIDTH : 100 IN.
 WEIGHT (READY TO OPERATE) : 6250 LBS.
 MAST TILT : 8°
 SIDE SHIFT : 5 IN.
 FRAME OPENING : 60 IN.
 FORK TRAVEL : 30 IN.
 DRIVE TIRES : (3) 31 X 15.5 X 15
 TRANSMISSION : HYDROSTATIC DRIVE
 ENGINE : 60 HP WATER COOLED DIESEL
 MAX TRAVEL SPEED : 8MPH

AT A GLANCE



P55R PROWLER

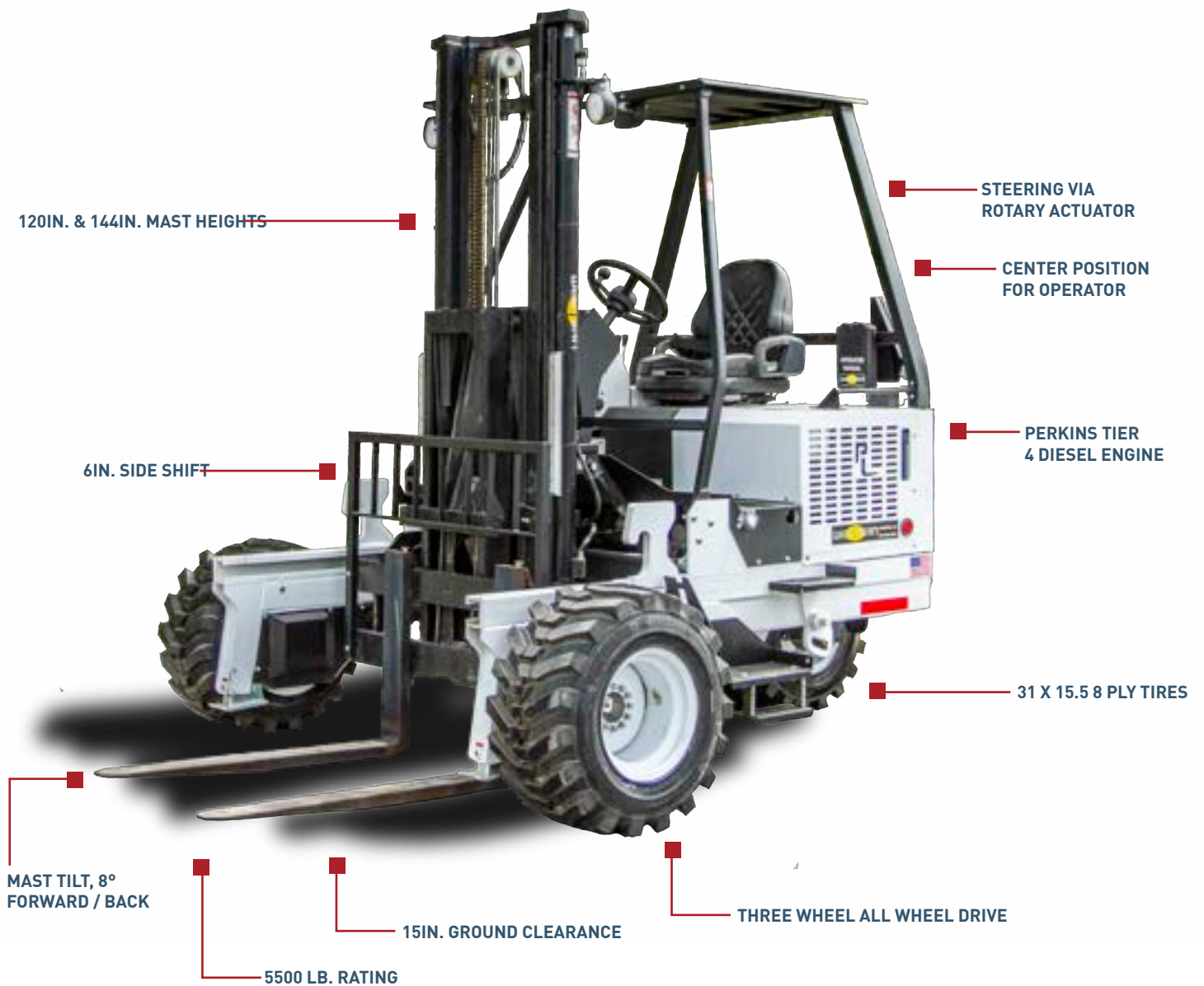
ALL-TERRAIN, TRUCK-MOUNTED FORKLIFT



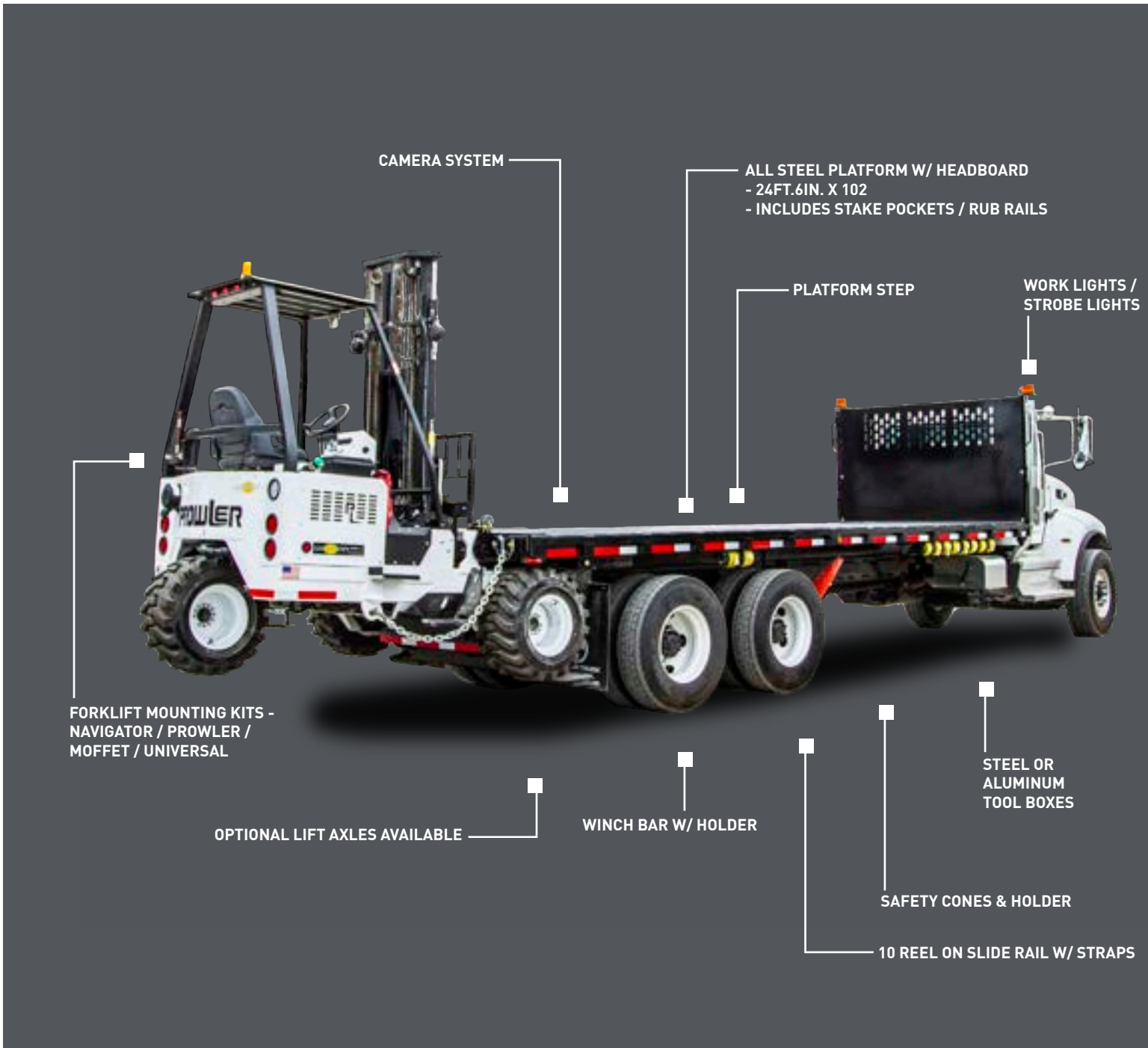
PROWLER P55R STANDARD SPECIFICATIONS:

5500 LBS. @ 24IN. LOAD CENTER
DOUBLE STAGE CLEAR VIEW MAST, 120IN. LIFT HEIGHT
DOUBLE REACH FEATURE - SINGLE SIDE UNLOAD
50 HP PERKINS DIESEL, MODEL 404FE TIER FOUR ENGINE
IMMERSION BLOCK HEATER
FULL TIME 3 WHEEL DRIVE
101.5IN. OVERALL HEIGHT
76IN. MOUNTED OVERHAND
101IN. MACHINE WIDTH
6140LBS. DRY WEIGHT
8° MAST TILT - FORWARD & BACK
6IN. SIDE SHIFT
58IN. FRAME OPENING
LOAD BACK REST
30IN. MAST TRAVEL
31X15.5X15 HEAVY LUG TIRES (3)
LED HEADLIGHTS
DANFOSS ELECTRO-HYDROSTATIC CONTROLLED TRANSMISSION
BUCHER SECTIONAL CONTROL VALVE
ROTARY ACTUATOR STEERING
48IN. LUMBER FORKS

AT A GLANCE



FORKLIFT / FLATBED COMBO





TELEHANDLERS



GEHL RS6-42

RATED LIFT CAPACITY: 6,600 LBS.
 GROSS POWER (KW): 115HP
 MAXIMUM LIFT HEIGHT: 42FT.0IN.
 MAX. TRAVEL SPEED: 18.8 MPH
 TURNING RADIUS: 13FT.8IN.
 (10° FRAME TILT BOTH DIRECTIONS)

THREE STEERING MODELS : 4-WHEEL,
 2-WHEEL, AND CRAB

TOTAL CAPACITY (L/MIN) : 40GPM (151)
 SYSTEM PRESSURE : 3,000 PSI
 HYDRAULIC RESERVOIR CAPACITY : 45 GAL.

ROTATING CARRIAGE : 48IN. & 66IN. WIDE

PERSONNEL WORK PLATFORM :
 180IN. SWING PLATFORM
 & 48IN. X 50IN. X 144IN. PLATFORM

SWING CARRIAGE : 90° & 180° SWING

LOG AND PIPE GRAPPLE

JIB BOOM : 5FT. W/ WINCH AND 60FT. CA-
 BLE

TRUSS BOOM : 15FT. W/ OPTIONAL WINCH



GEHL RS8-42

RATED LIFT CAPACITY : 8,000 LBS.
 GROSS POWER (KW) : 115 HP
 MAXIMUM LIFT HEIGHT : 42FT.0IN.
 MAXIMUM TRAVEL SPEED : 78.8 MPH
 THREE STEERING MODELS : 4-WHEEL, 2-WHEEL, AND
 CRAB
 RATED SPEED : 2,500 RPM
 TOTAL CAPACITY (L/MIN) : 40 GPM
 SYSTEM PRESSURE : 3,000 PSI

ROTATING CARRIAGE : 48IN. AND 66IN. WIDE
 FORK SHIFT : 50IN. WIDE
 PERSONNEL WORK PLATFORMS : 180° SWING PLATFORM
 AND
 48IN. X 50IN. X 114IN. PLATFORM
 SWING CARRIAGE : 90° & 180° SWING
 LOG & PIPE GRAPPLE
 JIB BOOM : 5FT. W/ WINCH AND 60FT. CABLE

PERFORMANCE:
 PROVEN STRENGTH OF WELDED BOX-SECTION BOOM
 DESIGN
 CYLINDER DESIGN PROVIDES LEADING CYCLE TIME
 STRONG FRAME W/ REINFORCED C-CHANNELS
 PERFORMS WELL UNDER HEAVY LIFTING CONDITIONS
 SUPERIOR PERFORMANCE ON UNEVEN TERRAIN

INTERNAL WET DISC BRAKES PROVIDE EXCELLENT
 STOPPING ABILITY & LONG LIFE

DUAL-ELEMENT AIR FILTER PROTECTS THE ENGINE
 FROM AIRBORNE CONTAMINANTS, INCREASING ENGINE
 PERFORMANCE AND LONGEVITY



MANITOU MHT10-225

ENGINE :

ENGINE BRAND : MERCEDES
ENGINE TYPE : 3A
ENGINE HORSE POWER : 175
ELECTRONIC FUEL INJECTION

DRIVETRAIN :

TRANSMISSION : HYDROSTATIC

DIMENSIONS :

DRY WEIGHT : 65,560 LBS. (W/ STANDARD FORKS)
OVERALL VEHICLE SIZE : 22.5FT. X 8.75FT. X 9.75FT.
GROUND CLEARANCE : 1FT.5IN.
TURNING RADIUS : 19FT.8IN.
GROUND SPEED : 15.5 MPH
LIFTING HEIGHT : 31FT.8IN.
LIFTING CAPACITY : 49,500 LBS.
HITCH/TYPE : ADJUSTABLE PIN STYLE
COOLING SYSTEM : LIQUID

FEATURES :

BLOCK HEATER OPTION
AIR RIDE SEAT
FORK POSITIONER + SIDE SHIFT
FORKS, 4FT. X 8FT. X 70IN.
TRIPLE HYDRAULIC OUTPUT ON BOOM HEAD
WINDSHIELD PROTECTION GRILL
HEATER & AIR CONDITIONING
FULL GLASS ENCLOSED CAB
ROAD & WORK LIGHTS, LIGHTS ON BOOM
REMOTE CONTROL OPTION
BATTERY CUT OFF SWITCH
EMERGENCY BRAKE & STEERING



MANITOU MHT10-180

PERFORMANCE :

LIFTING HEIGHT : 31FT.7IN.
LIFTING CAPACITY : 39,600 LBS.
MAX REACH : 18FT.3IN.
MAX REACH CAPACITY : 11,684 LBS.
DRAWBAR PULL : 34,845 LBS.
MOVING SPEED : 15.5 MPH

DIMENSIONS :

LENGTH (UP TO THE BACK OF THE FORK) : 21FT.10IN.
TOTAL LENGTH (FORK INCLUDED) : 29FT.9IN.
WHEELBASE LENGTH : 12FT.4IN.
WIDTH : 8FT.3IN.
HEIGHT : 9FT.10IN.
WEIGHT (UNLADEN) : 52,910 LBS
TURNING RADIUS : 18FT.0IN.
GROUND CLEARANCE : 1FT.5IN.

TRAILERS



PUP TRAILERS

BUILT FOR DRYWALL-SPECIFIC
APPLICATIONS

LENGTHS RANGING FROM 14FT. TO 16FT.

HIGH STRENGTH FRAME W/
DECKING OPTIONS AVAILABLE



LOAD KING TAG + TAG & TILT TRAILERS

LOAD KING HAS LONG BEEN A LEADER IN THE CONSTRUCTION TRAILER INDUSTRY. INNOVATIVE DESIGN FEATURES AND PRODUCTION STANDARDS MAKE LOAD KING ONE OF THE BEST VALUES ON THE ROAD TODAY. OUR TAG & TILT LINE INCORPORATES FEATURES SUCH AS LOW DECK HEIGHT, ADJUSTABLE SUSPENSION, PIERCED BEAM CONSTRUCTION, AND MANY MORE TO PROVIDE YOU WITH A TRAILER THAT WILL EXCEED YOUR NEEDS. WHEN CONSIDERING SAFETY, QUALITY, AND OVERALL DEPENDABILITY, LOAD KING GOES BEYOND THE INDUSTRY STANDARD.

AVAILABLE MODELS:

LK-10T
LK-12T
LK-15TT
LK-20T
LK-20TT
LK-25T



